

Engineering Out Front

Best of the Best

Among Rutgers University's first-year class, 25% of enrolled Presidential Scholars – the top awardees – are from SoE.



Top 5 Public Universities in the Northeast

U.S. News & World Report, Best Colleges
Washington Monthly, College Guide
Center for Measuring University Performance, Top Public Research Universities

Class of 2018 Profile

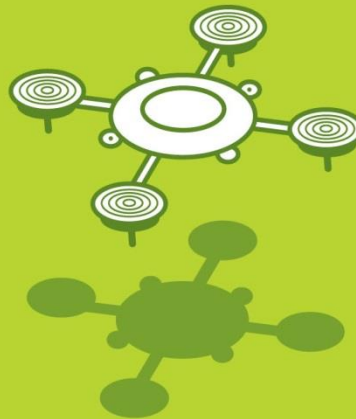
767

Size of first-year class

“We get there together!”



With a challenging program, making sure students successfully move from first-year to sophomore year is a priority.



1 of 6

FAA-designated test sites for the commercialization of unmanned aircraft systems into national airspace.

Established in

1864

Among the oldest engineering programs in the U.S.

1968

Mean SAT

196

Students receiving \$1,678,000 in university scholarships

10%

Members of Engineering Honors Academy

\$62,200

Average reported starting salary of Class of 2014 graduates.



Awarding science and engineering doctorates to women, according to the National Science Foundation.

147

Tenured and tenure-track faculty hold numerous patents, work in partnership with industry and government, and are fellows of leading engineering and science organizations.



\$60 million

Annual research expenditures support an array of leading-edge research.

SoE Students

3,600

Undergraduate

1,000

Graduate

Small enough to promise the focus of a professional school, but large enough for students to enjoy all the advantages, resources, and opportunities of a leading public research university.

More women applicants year-over-year increases enrollment to

24%

women students.

Douglass Engineering Living-Learning Community offers women a unique and supportive residence experience.

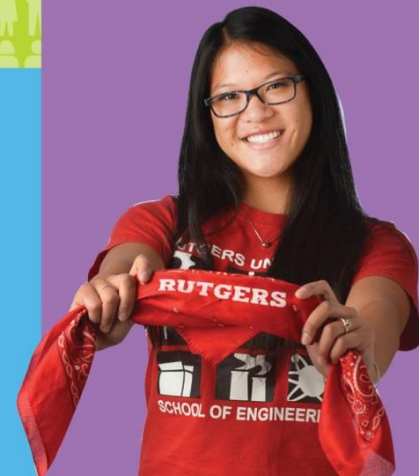


1 of 5

U.S. Department of Transportation-designated National University Transportation Centers.

20,000

Alumni community includes recognized leaders in industry, government, and research engaged as mentors providing internships, jobs, and opportunity.



7 Departments, 9 Degree Majors

- Applied Sciences
 - Packaging Engineering
- Bioenvironmental Engineering
- Biomedical Engineering
- Chemical and Biochemical Engineering
- Civil and Environmental Engineering
- Electrical and Computer Engineering
- Industrial and Systems Engineering
- Materials Science and Engineering
- Mechanical and Aerospace Engineering

5 Research Centers

- Center for Advanced Infrastructure and Transportation Systems
- Ceramic, Composite, and Optical Materials Center
- Energy Storage Research Group
- ERC for Structured Organic Particulate Systems
- WINLAB, Wireless Information Network Laboratory

soe.rutgers.edu

RUTGERS
School of Engineering